

This community newsletter is sent out monthly on behalf of tawalink.com, Tawa's community website since 2002.

Other sources of online community information in Tawa:

www.neighbourly.co.nz • www.facebook.com/VibrantTawa • www.facebook.com/tawacommunityboard

WANT A STALL AT SPRING INTO TAWA?

Spring into Tawa will be back on Saturday 27 October 2018 and will be bigger and better than ever. More stalls, more activities for children, more entertainment and more fun!

Spring into Tawa is an annual community festival, featuring local groups and stallholders, quality crafts, delicious food stalls and trucks and amazing entertainers and performers.

Applications for stalls are now open, and close on 24 August. Apply online on the Spring into Tawa website – www.springintotawa.nz. Applying online is the easiest way to apply – but if this is not possible, there are a small number of hard copy forms available at the Tawa Community Centre (Mandy and the team will also scan your completed form and send it through to us).

Make sure you register soon and come along to be part of this fantastic event!

Follow Spring into Tawa on Facebook for updates on the event – www.facebook.com/springintotawa



COME TO THE LIONS' MARKET AND GET YOUR 200L WATER TANK!

This coming Saturday, 11 August, between 11am and midday you'll be able to pick up your own 200L emergency water tank in Tawa at the Lions' Market at Outlet City. Northern Ward councillors will be selling them for \$110 each.

The only place the Wellington City Council sells these tanks on a regular basis is at the Southern Landfill – a 40km round trip for most Tawa residents. Much easier to head to Outlet City!



The experts tell us we should arrange for our own emergency water storage of 140L per person (20L per day per person for seven days). Wellington Water will ensure that water will be available to us to collect from day 8 after a major disaster.

We will have a limited supply of 200L water tanks on Saturday 11th. To reserve your own tank(s), email malcolm.sparrow@wcc.govt.nz and pay by internet banking. Otherwise we may have a few extras available on the day.

ROTARY TAWA BOOK FAIR

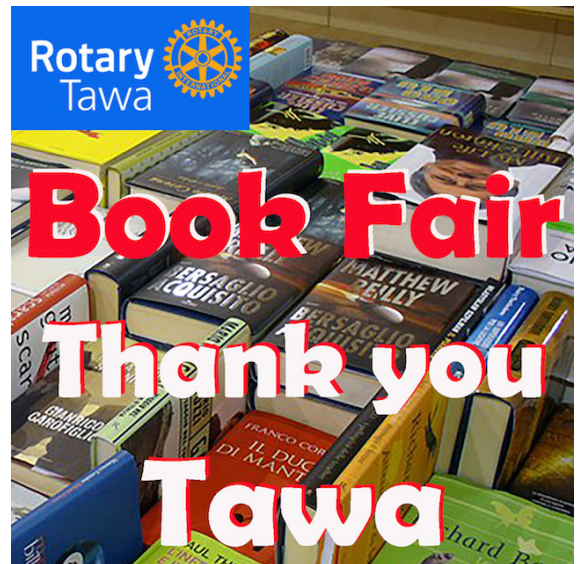
Thank you, Tawa, for your generosity in donating and buying books and for saying “keep the change”. And to our loyal customers from further afield. Thank you too to our generous sponsors: New World Tawa, Harcourts, Mexted Motors, Ray White and Eftpos.



Your generosity makes it possible for Tawa Rotary to continue to support a number of local community causes and international projects on Tawa's behalf, including

Life Education Trust's work in Tawa schools, Foster Hope Wellington, Predator Free Tawa, youth programmes in Tawa schools, End Polio Now, cyclone relief, and the Rotary Foundation, one of the largest and most successful global humanitarian grant funds in the world.

Net proceeds in 2018 are likely to total around \$25,000. See you next year.



TAWA ROTARY BUSINESS BREAKFAST

Dave Greenberg will be guest speaker at Tawa Rotary's Business Breakfast at The Borough on Wednesday 22 August, 7.00am to 8.30am.

A few days before his 14th birthday Dave helped save the life of a stranger on a New York street. This event helped shape his life. He became a volunteer firefighter and ambulance officer, but it was his IT work that brought him to New Zealand for a one year contract. He never left and spent the next 25 years as a crew member on the Wellington-based Westpac Rescue Helicopter.



All members of the wider business community are invited to share a cooked buffet breakfast and hear Dave share life and business lessons learned from his time in the emergency services.

Register to attend by emailing tawarotaryclub@gmail.com with the \$25 payment made in advance by internet banking to: A/c 02-0552-0037039-00 (Code: BB3; Ref: Your name).

For more information contact Judith Gray at tawarotaryclub@gmail.com

Meet the Mayor and have your say

An opportunity to hear from the Mayor and Councillors about plans for your area – ask questions, voice concerns, meet neighbours and engage with Wellington City Council

City Councillors:
Jill Day
Peter Gilbert
Malcolm Sparrow
Sarah Free and
Chris Calvi-Freeman
look forward to talking with you on the night

5.30pm, Thursday 30 August
Tawa Community Centre
5 Cambridge Street, Tawa

Me Heke Ki Pōneke

Absolutely Positively Wellington

mayor in the chair

CLOSURE OF PERGOLA/PLATFORM AGAIN

The following has come through from Council:

“Tawa Platform [aka the Lions pergola – between On the Spot drycleaners and Take Note Tawa in the central shopping area] is closed due to erosion around a post in the stream.



An engineer is checking it out and will get back to us with a report on their recommendations of what we need to do to save the platform and retain the stream bank.



The platform may be closed for some time so we will arrange for signage to go up so the public are aware of what is going on.”

TUI PARK LITTLE FREE LIBRARY

The Tui Park Little Free Library opened for business on 1 August. It is located at the Coates Street entrance to Tui Park (between 5 and 7 Coates Street) in Linden.



The library belongs to the community and is for everyone to use. It contains a selection of fiction and non-fiction books ranging from babies’ board books to adults reading books as well as magazines. Basically if you see a book or magazine you would like to read, feel free to take it home or read it in the park. If you really love it, you are welcome to keep it. When you have finished you can bring it back, give it to someone else to read or put it in another Little Free Library.



If you have a book or books to add to the library to share with everyone, that’s great too. If you would like to find out more information, please check out the Facebook page: Tui Park Little Free Library.

CONGRATULATIONS TO NADA BAKERY

From the Nada Bakery Facebook page:

“We have done it again and won a Silver award for our Chicken and vegetable pie along with some other top 10 placings. Great to be recognised as being amongst the best from over 6000 pies on the table. Thanks to the #Nadabakery team for all your help.”

An impressive achievement indeed. Well done, Nada!



TAWA BOWLING CLUB INVITATION

Tawa Bowling Club invites you to have a go at lawn bowls every Sunday in August, 10am to 12 midday. The bowling club is located in Davies St, just before Tawa Pool.

TAWA COLLEGE MAJOR PRODUCTION - “OUR TOWN”

‘Our Town’ is a Pulitzer Prize winning drama from American playwright, Thornton Wilder. The play tells the story of the fictional American small town of Grover’s Corners between 1901 and 1913 through the everyday lives of its citizens.

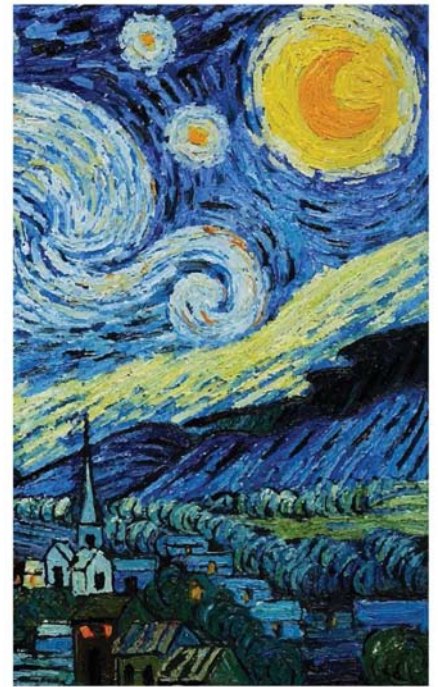
‘Our Town’ has a unique, *play within a play* style, and transcends the constraints of time and space to confront its audiences with the big questions of our purpose and immortality. Do we, the living, truly know what it means to live? Come and find out when you visit us in ‘Our Town’.

In the Tawa College Hall at 7.30pm:

- Tuesday 7 & Wednesday 8 August
- Friday 10 & Saturday 11 August

Tickets are available from the College office or Drummond’s Pharmacy. \$15 per adult, \$10 per student.

Tawa College Presents



**Thornton Wilder's
OUR TOWN**

TAYLOR PARK DOG EXERCISE AREA REMEDIAL WORK

Council has been looking at what drainage work can be done to improve the condition of the dog exercise area at Taylor Park, parts of which can become quite a quagmire during wet winter months.

Various (affordable) options have been considered, one being to install a pathway through the park to make it more useable through winter. Drainage work like sumps was planned but unfortunately the heavy rain came in May/June so that work was delayed. The plan is still to put in some sumps but that won’t happen for a couple of months.

The northwest corner of the park is where Council is looking to put sumps. Because it was so wet and boggy it was fenced off about a month ago to allow the area to rest. That section is not likely to re-open until some drainage is done.

Raised gravel walkways with a geotech material underneath have been constructed through the park, the same type of material that is used on Council bike trails, 20mm lime stabilised top course. This hardens after a couple of weeks. It will not be sealed as this would create more issues around drainage with the water getting trapped around the paths.

There is a large grass mound of backfill at the southern end of the park that was left after the Tawa Valley Pathway – Ara Tawa Walkway was completed. This mound will be removed and that end will then be opened up, providing more area for dogs to run.

The third gated entrance will be installed in two to three months time.



ADDITIONAL FENCING IN DOG EXERCISE AREAS

The dog exercise areas at Duncan Park and Grasslees Reserve are not fully-fenced. There are in fact only three fully-fenced dog parks in the whole of Wellington, one of those being Taylor Park, south of Redwood Station in Tawa.

Council has recently added 'low' additional fencing at both Grasslees Reserve and Duncan Park to ensure dogs are less likely to wander off in directions that they shouldn't. The onus is always on the dog owner to "be in control" of their dog to ensure it doesn't do a complete runner (as they say). Otherwise take it to Taylor Park!

Re Grasslees Reserve, Council advises that "The area is too small to fully fence so the new fence was to give a barrier between the off-lead dog exercise area and the Main Road in the southwest corner. The new fence matches the existing fence already in place along the Main Road."

With Duncan Park "The idea was to put some separation between the play area and the off-lead dog exercise area. The fence is 900mm high pipe and mesh. It runs along the path and includes a pedestrian gate and a maintenance gate for mowing."



Grasslees Reserve



Duncan Park

Tawa Historical Society Inc

Details of the society's AGM are below.

Tawa Historical Society Incorporated

—Annual General Meeting—

- **Monday 20 August 2018**
- **At 7:30pm**
- **Tawa Community Centre,
5 Cambridge Street, Tawa.**

Members and potential members are invited to attend this meeting and to find out first hand about the work of the society.

At the Annual General Meeting we will review the work of the society over the past twelve months and outline our plans for the year ahead.

We will then elect the officers for the 2018/2019 year.

Hon. Peter Dunne, Society member will speak on 'Tawa - past & present and items of general interest.'

**The evening will conclude with refreshments.
ALL WELCOME**

Kiwi Community Assistance

QUIZ NIGHT

A FUNdraiser Evening Supporting KCA

Sunday, 9 September from 7-9pm at the
The Borough, 162/168 Main Road, Tawa
teams of 4-6 people, \$15 per person
Prizes and Raffles

Tickets must be pre-purchased. Payment to:
Kiwi Community Assistance Charitable Trust
a/c 02-0552-0024/99-097 quoting 'Quiz Night'
and 'payer's name' in Reference fields.

Kiwis working together to reduce inequality in our communities

GRENADA NORTH BUS 'BASE'

Grenada North has been 'home' to many of the region's new bus fleet in recent weeks. This is a temporary arrangement, with the new bus depot ultimately being based in Grenada Village.

Quoting from the Greater Wellington Regional Council: "The transition to the new depot should start in six to eight weeks, but it might be some time until all the buses have gone from Grenada North."



INNER WHEEL QUIZ NIGHT

This year's Quiz Night is on Thursday 6 September.


Last year we [Inner Wheel of Tawa] ran our first quiz night and it was, with support from The Borough, a raging success. We have decided to make it an annual event on our calendar.

Inner Wheel is a Women's service organisation and we aim to raise funds to be able to support organisations in our local and wider communities. Recently, at our "Changeover Meeting", we donated funds to Tawa Community Patrol, Look Good, Feel Better (National Charity), Tawa Youth and Family Trust, the Salvation Army food bank, and the Redwood Club.

We hope to raise equal to or greater than last year to continue our rich heritage of support in our wonderful community.

QUIZ NIGHT

Organise a team for this annual Inner Wheel of Tawa event – time to invite sons/daughters/in laws, grandchildren, neighbours and friends. Generous sponsorship from "The Borough".



When: Thursday 06 September 2018
Where: The Borough – Main Road, Tawa
Cost: \$10.00 per person
Time: 7.00pm for a 7.15pm start

Spot prizes/Auction/Buy an Answer/Coin Petanque

Contact Carolyn for tickets and payment details
carolynjerutch@gmail.com
04 232 1259

Funds raised at this event go towards supporting work in the local community i.e Tawa Community Patrol, Tawa Youth and Family Trust, Tawa Salvation Army food bank.

PASSING OF TONY PARKER



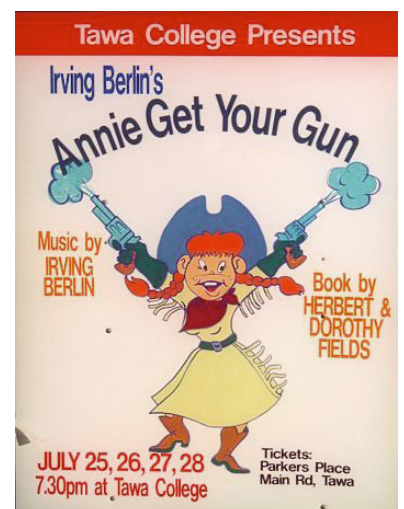
Tony Parker at the opening of the Tawa Recreation Centre in 2004.

Tony Parker served on the the Tawa Community Board from July 1995 to October 2007. He died at Hutt Hospital early last week.

His wife Margaret ran Parker's Place, a gift shop near Drummond's Pharmacy, in Tawa's central shopping area for many years.

Tony was part of the community board involved in an earlier upgrade of the Tawa town centre, the planting of pohutukawa trees in the central shopping area being a key part of that upgrade.

He was a member and past president of the Tawa Lions Club from 1980 to 2008 and was a "very active and encouraging member". Tony and his wife moved to the Kapiti Coast following his retirement from the Tawa Community Board.



2001: tickets available from Parker's Place, Main Rd, Tawa

RAILWAY CROSSING AT REDWOOD STATION



From Tracksafe NZ's Facebook page at <https://www.facebook.com/TrackSAFENZ>:

"Great to see that civil works started [earlier this week] at the Tawa Street level crossing in Tawa. This crossing has been prioritised for automatic gates after several near misses with school children in the past two years.

Please follow the advice of the workers at the site and cross safely on the other side of the crossing. Look right, look left for trains, and be careful to check there is not a second train coming. Obey the lights and bells at all times."

NOTE: Rail Safety Week is next week – 13 to 19 August 2018.

NEWS FROM PEST FREE TAWA

From Pest Free Tawa: "We are very excited to announce Pest Free Tawa has been selected for the Kiwibank Predator Free Community programme in the most recent round of funding, which was the most competitive yet! This will give us a huge boost of funding and resources, and couldn't have been achieved without the awesome community support we've received so far."

See <https://www.facebook.com/pestfreetawa/>



IF YOU LIVE IN A "SHARED DRIVEWAY" IN TAWA

There are 41 shared driveways / private rights-of-way / private streets in Tawa that are private property. As a matter of course these are not the responsibility of Wellington City Council in the same way that public roading is. However Council does take care of the maintenance of the roadway itself (re-sealing and suchlike) in those shared driveways – for an additional annual levy – but that's as far as it goes.

WCC's Tawa Driveways Levy "..... pays for the maintenance of a specified group of residential access driveways in the suburb of Tawa, overseen by the Council. This rate is levied on a specific group of rating units in the former Tawa Borough at a fixed amount of \$150 (including GST) per annum."

Residents in some of the shared driveways / private rights-of-way in Tawa have made enquiries in recent times about Council installing a streetlight in their shared driveway / right-of-way. In most of these instances there are valid reasons for needing to install a streetlight.

Council's response is that in a privately-owned shared driveway (right-of way or private street) it does not have the authority or obligation to put in lighting or provide any other services. If residents in a shared driveway want a streetlight installed, it is up to them to arrange it themselves at their own cost. Unfortunately that is the reality of the situation.

In summing up, Council has no responsibility for "shared driveways" in Tawa other than maintaining and re-sealing the roadway itself – which is what the \$150 additional rates levy per year covers.



One of 41 "shared driveways" in Tawa

2 MINUTES WITH Eric Raven

Eric Raven is one of that rare breed who has lived in Tawa all of his life to date, with both his parents and his own children part of this community. He is the man behind the Facebook pages entitled “I am proud to be from Tawa” and “Linden appreciation society”.

The introduction to his Linden page reads: “Linden ... the most righteous and noteworthy suburb in the Wellington region. Complete with its own fish & chip shop, 2 primary schools, doctors’ surgery, community centre, cricket & hockey parks and proudly boasting New Zealand’s only International Railway Station. Linden rocks, go Linden!”



Where were you born? Kenepuru Hospital

Where did you grow up? Tawa

Where were you educated?

Linden School, Tawa Intermediate, Tawa College and Whitireia Polytech in Porirua.

How long have you lived in Tawa?

All of my life – I’ve never actually lived anywhere else. Fun fact: I’ve lived in four different houses in Tawa and they are all within a 2km radius. I can see two of them from my current house plus the hospital I was born in. The longest time that I’ve spent being away from Tawa was 7 weeks when I took a holiday to Europe.

What about family?

Married to Caroline and we have two children (James, 11, currently at Tawa Intermediate and Natalie, 9, currently at Greenacres School). My parents and uncles still live in Linden too (also within the 2km radius of awesomeness).

Work experience over the years

Inland Revenue since 1992. 12 different roles over that time. I did work at KFC Porirua branch for two years when I was a student.

What are your interests and hobbies?

I still play social hockey and cricket for Tawa teams. I like all kinds of outdoor recreational activities – including skiing, mountain biking and kayaking. I love travelling all around NZ and discovering new places and re-visiting old favourites.

I’m on the events committee at Greenacres School so I spend a lot of time helping them raise funds and organising fun events.

I love anything to do with Christmas, snow and lego. At Christmas I decorate my house in over 10,000 LED lights and have a Christmas lego display in our spare room window.

I’ve recently started brewing craft beer with my dad.

What is your favourite holiday destination in New Zealand?

I seem to spend a lot of time in Ohakune in the winter months, but my favourite destinations are probably all in the South Island – Hanmer Springs, Wanaka, Westport & Castle Hill Village (I can’t pick a favourite).

What accomplishments/achievements in your life give you the most satisfaction/pride?

Getting married, having our two kids, and convincing my Kelburn “city girl” wife to move out to Tawa to live.

What are three things you would like to do before you die?

1. Go skiing in Canada
2. Win Lotto so I can pay for a ski holiday in Canada
3. Try living somewhere else other than Tawa to see what it’s like, lol – no just kidding – I can’t imagine I’ll ever leave.

TAWA'S LATEST BUSINESS WILL MAKE EVERYONE SMILE

– article supplied by Darren Fergus

It's great to see how our little township (Tawa) never fails to surprise. As you all know we have a great community with lots of exciting things to do. Well that just went up a few more gears, quite literally actually. XtremeX Limited, which launched mid-July to a complete sell out, offers various rides in one of the most iconic car brands in existence today, a Lamborghini Gallardo Spyder, which is a 5.0 V10 supercar.

It seems Darren Fergus, who is the director and a local Tawa resident, has managed to launch his new business skyward into an exciting new realm of possibilities.

From the director himself: "I really wanted to do something different. Wellington in general is a great place, but we definitely miss some of the more extreme things, such as those available in other areas of New Zealand. It was also important whatever I chose related strongly with what people might love.

XtremeX offers just this, a passenger service which is safe, legal and very carefully planned to ensure everyone can have a fantastic time. Just check out our reviews on Facebook to see this."

Overall this sounds like great fun for everyone and you can find out more information from these links:

Website: www.xtremex.co.nz

Facebook Page: www.facebook.com/xtremexnz

Reviews: www.facebook.com/xtremexnz/reviews



Ngā mihi

Malcolm Sparrow

info@tawalink.com 027 232 2320



"I am currently under construction. Thank you for your patience."

"I never make the same mistake twice. I make it five or six times, just to be sure."

"Never say you have failed until you have reached your last attempt, and never say it's your last attempt until you have succeeded."

This newsletter is emailed monthly to around 1250 Tawa households, businesses, schools, churches and clubs/groups (anyone who has an interest in the community of Tawa).

Some articles in this newsletter have been sent through by members of the Tawa community and have been published 'unedited'. They may not necessarily reflect the views of the Editor.

If you no longer wish to receive the newsletter, please send us an email requesting that your name be deleted from our list.

See www.tawalink.com/newsletters.html for back issues of the newsletter.

Tawa Community Centre

A friendly place to pop in during the hours of 9am-1pm on weekdays, or hire a room or hall for your community group / birthday party / meeting at reasonable rates.

Like us on Facebook at:

<https://www.facebook.com/TawaAndLindenCommunityCentres>



Early August in Tawa – a foretaste of spring

On a personal note (Feel free to skip):

Spending time elsewhere broadens the mind, as they say. That may be the case for a few. For others, we simply enjoy the experience and learn to better appreciate the fact that we have it pretty good on the whole in these far flung islands that make up New Zealand.

I've recently returned from a great two (plus) weeks* in the USA, always an exciting place to visit. It's a land of contrasts, extremes and complexities. Without going into detail, I do think that life in New Zealand really is 'simpler' in many respects and somewhat less inequitable than in places like the US.



Carter Presidential Center in Atlanta, GA



Experiencing the interstate system



South Carolina state capitol building

When it comes to internal travel, the United States is superb with its vast highway system but no fun whatsoever when one has to fly. How easy it is in New Zealand to report for a domestic flight a mere 30-40 minutes before departure time and breeze through security usually within a matter of minutes (or not at all when flying to smaller centres). Contrast that with needing to be at an American airport two hours or more before departure, and spending 25 to 30 minutes in long lines, removing belts and footwear, etc, then being subject to the once-over in the xray cylinder, all in the name of security. Yes, perhaps there's a need for it, but how much less complicated the process is in little old NZ!

On the other hand, I always find driving in the USA great fun. The freeways are a pleasure to use, enhanced by the chance to cruise at speed limits of 70 to 80 mph (112 to 128 km/h). And 'gas' at NZ99c/litre is somewhat more affordable than here!



America's most visited national park



The Parthenon in Nashville, TN



Chattanooga Choo-Choo train

"America the Beautiful" is very accurate with so much scenic beauty encapsulated in numerous national parks which are always great to visit. New Zealand is also renowned for its great scenery. The difference is that we're so much more compact. You don't have to travel the same kind of distances to enjoy the scenic highlights!

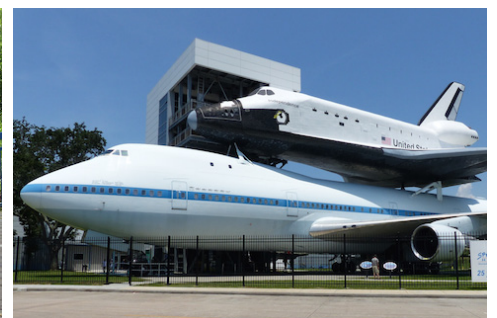
* The above report was written in August three years ago when I spent three weeks in the USA. I was fortunate enough to visit there again last month. My sentiments in 2018 are the same as they were in 2015. The only real difference is the photos set out on this page. Most of this year's visit was spent in Georgia and Tennessee.



Civil War battlefield site overlooking Chattanooga, TN



Bike share scheme which allows riding for up to 24 hours for US\$8



Johnson Space Center in Houston, TX