

*This community newsletter is sent out monthly on behalf of tawalink.com, Tawa's community website since 2002.*

*Other sources of online community information in Tawa:*

*www.neighbourly.co.nz • www.facebook.com/VibrantTawa • www.facebook.com/tawacommunityboard*

THIS EDITION IS A SUPPLEMENTARY NEWSLETTER. THE NEXT FULL ISSUE IS SCHEDULED FOR EARLY SEPTEMBER.

## **TAWA COLLEGE COMMUNITY EDUCATION**

### **Staying Safe for Senior Drivers (Provided by NZTA)**

Facilitator: Peter Sheppard, Road Safety Consultant

3 Wednesday mornings – Starts on 12 September from 10am-12.30pm. Fee: \$10

A refresher workshop for senior road users held at the Emmaus Centre, Tawa Anglican Church. This course has been subsidised by Tawa Lions Club. Staying Safe is a classroom-based refresher workshop for senior road users. The workshop aims to maintain and improve safe driving practices and increase knowledge of transport options available to help senior road users remain mobile.

This is a new Staying Safe workshop which will help senior drivers re-familiarise themselves with traffic rules and safer driving practices as well as increase their knowledge about other transport options available to help them stay mobile for as long as possible.

Enrolments can be made from the Community Education website [www.tawacommed.co.nz/driving](http://www.tawacommed.co.nz/driving)



## **GIFT SHACK FUNDRAISING DAY**

See details in the ad at right. Gift Shack is a relatively new store and is located in Tawa Plaza, between the Main Road and the western entry to New World.



In support of

**Tawa Intermediate Diamonds Netball Team**

Raising funds to go to the 2018 AIMS Games in Tauranga.

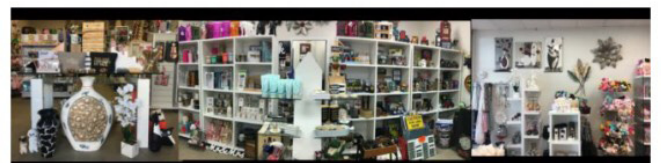
GiftShack will be donating 15% of all in-store sales on  
**Thursday 16th August 9am-8pm**

Make a purchase on the day (big or small - it all helps)  
for your chance to win some extra goodies.

## **TEMPORARY TAWA ST CLOSURE**

As per the newsletter sent out earlier this week, work is being carried out at the Tawa Street level crossing which will result in the installation of automatic gates to improve the safety of pedestrians at that crossing.

As part of that project, Tawa Street will be closed to through traffic from 5am on Saturday morning, 11 August through to 8pm Sunday evening, 12 August.



## ROAD WORKS IN ORIEL AVE

We asked Council what the story was with the road works at the bottom of Oriel Ave (intersection with Redwood Ave), as the road works seem to be taking a very long time with seemingly little activity occurring.

Council's response:  
"We have contacted the Network Transport Maintenance Team in regards to your enquiry. The road works were held up due to a sink hole which drainage had to investigate. There was a broken private sewer lateral. This has recently been completed and the team are planning to carry on with this work, repairing potholes and final surface treatment next week, subject to weather conditions."



**Meet the Mayor and have your say**

Me Heke Ki Pōneke Absolutely Positively Wellington

**mayor in the chair**

An opportunity to hear from the Mayor and Councillors about plans for your area - ask questions, voice concerns, meet neighbours and engage with Wellington City Council

City Councillors:  
Jill Day  
Peter Gilbert  
Malcolm Sparrow  
Sarah Free and  
Chris Calvi-Freeman

look forward to talking with you on the night

5.30pm, Thursday 30 August  
Tawa Community Centre  
5 Cambridge Street, Tawa



**FREE ENTRY!**

**'SPRING INTO TAWA**

Community & craft stalls, entertainment, children's activities, food trucks & stalls + MUCH MORE!

**STALLHOLDER APPLICATIONS OPEN NOW  
APPLY ON OUR WEBSITE**

**Saturday 27 October 2018**  
10am to 3pm Main Road, Tawa

EMAIL [SPRING.INTO.TAWA@GMAIL.COM](mailto:SPRING.INTO.TAWA@GMAIL.COM)  
VISIT [WWW.SPRINGINTOTAWA.NZ](http://WWW.SPRINGINTOTAWA.NZ) FOR MORE INFORMATION

**TAWA** Wellington  [www.digitaltree.co.nz](http://www.digitaltree.co.nz)



 **Rotary Tawa** 

**Rotary Tawa and the Tawa Business Group Business Breakfast**

Guest Speaker: **Dave Greenberg**  
Former Rescue Helicopter Pilot



<b>Date:</b>	Wednesday 22nd August, 7.00am
<b>Venue:</b>	'The Borough', Main Road, Tawa
<b>Cost:</b>	\$25/head - Cooked Buffet Breakfast
<b>Payment:</b>	Via internet banking <b>in advance</b> to account 02-0552-0037039-00 Ref. code: BB3, your name
<b>RSVP:</b>	<a href="mailto:tawarotaryclub@gmail.com">tawarotaryclub@gmail.com</a>

Sponsored By  **Roy White** 

Lyn Calman 027 454 8539 

## **DON'T PARK ON THE GRASS!**

Parking on the grass is already forbidden at Takapu Road Station. See the pic. However at the Redwood Station park and ride facility, parking on the grass seems to have been “accepted practice” (rightly or wrongly) for some time. That has now changed.

Metlink is warning people not to park on the grass, otherwise they'll be clamped. And that's exactly what happened last week. The message didn't reach some people who continued to park on the grass. Unfortunately they found their vehicles clamped when they returned to them at the end of the day. \$150 later their vehicles were released by the kind clamping people.

The suggestion has been made to Metlink that the most effective ‘warning’ at Redwood Station would be to have signs in the grass telling people not to park there. However such signs have not yet appeared and people continue to park on the grass, albeit in smaller numbers.



The pic at left was taken yesterday (Wednesday) at Redwood Station. A “breach notice” was placed on its windscreen at 1.07pm. By 4.35pm no further action had been taken, unlike previous parkers who were clamped on the same day they received their notice.

People don't park on the grass at Takapu Road Station because of the warning signs. The message won't get through to everyone who parks at Redwood Station that parking on the grass is no longer permitted until there are similar signs in place. In the meantime you have been warned!



## **PROGRESS WITH THE UPGRADE OF TAWA PLAZA**

There have been delays in acquiring a contractor to carry out the promised upgrade to Tawa Plaza. However Council has this week informed us “We have secured a contractor to complete the Tawa Plaza upgrade. We are working with them on the programme of work and will update the project website and send a wider stakeholder update once timelines are confirmed.”

As part of the project there will be new garden beds and five new trees planted in the Plaza. These areas will provide more opportunity for green in the space. There are artistic impressions at <https://wellington.govt.nz/your-council/projects/tawa-town-centre-improvement-project>

Ngā mihi

Malcolm Sparrow  
info@tawalink.com 027 232 2320

