

This newsletter has been sent out monthly since 2005. See www.tawalink.com/newsletters.html for back issues.

Other sources of online community information in Tawa: <https://www.facebook.com/groups/701254429944972>
www.neighbourly.co.nz • www.facebook.com/VibrantTawa • www.facebook.com/tawacommunityboard

SPRING INTO TAWA THIS MONTH

Spring into Tawa is Tawa's annual festival, featuring an amazing range of stalls, food, activities and entertainment. This year's event will be held on Saturday 17 October, 10am to 3pm.

For more information visit www.springintotawa.nz or follow www.facebook.com/SpringIntoTawa for regular updates.

Come and celebrate 20 years of Spring into Tawa with a photo display looking back over the past 20 years.



Spring into Tawa stalls in Tawa Plaza – September 2013



2003



2005



2009



2014



Spring into Tawa September 2010, prior to "Tawa Goes to Town" later that month

CAN YOU HELP AT SPRING INTO TAWA?

Would you like to be part of the awesome #SpringintoTawa2020? We're looking for volunteers to help us put on this cool event on Saturday 17 October. We've got a range of tasks and shifts – you can volunteer for as little or as much as you like!

Please complete this Google form <https://forms.gle/3Jqzz34jQYqEjUZZ6> and let us know how you can help us!

We need people to help with set up in the morning, managing some of the kids activities (Bouncy Castle, etc), managing the Band Stage, managing the Green Room for our entertainers and volunteers, and in the pack up phase.



A NEW BOOK ABOUT TAWA

Tawa its recreational parks and reserves

This book will be launched at 6pm on Monday 12 October 2020 in the Tawa Library.

Author Gilbert (Gil) Roper is a member of the "Tawa Historical Society" and "Friends of Tawa Bush Reserves" and the launch will be sponsored by these groups. See: www.tawahistory.org.nz and www.tawabush.org.nz

This new, full colour-illustrated, 190-page, A4 size publication features:

- a description of the 33 parks and reserves in Tawa
- aerial images and maps showing their location
- the walking tracks in the reserves
- the playground and recreational facilities available within the parks
- maps and images identifying the development of the parks and reserves
- descriptions of the history of the sports groups that use the parks
- iconic features and trees within the parks and reserves
- the origin of the names of the Tawa parks and reserves

SPECIAL PRICE FOR PRE-LAUNCH ORDERS

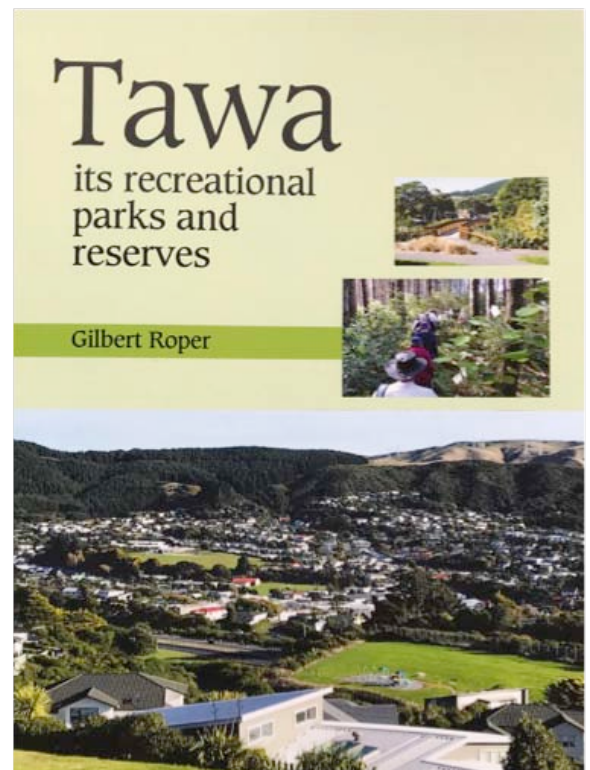
Up to and including the launch evening of 12 October, books may be ordered for \$30, then paid for and collected at the launch. From 13 October onwards, books need to be purchased directly from the Tawa Library, Corner Main Road and Cambridge Street, Tawa for \$35 each.

There is a limited print-run, and orders can be placed now by email with the Tawa Historical Society secretary: ken.woodgate@xtra.co.nz

For those who wish to take advantage of the \$30 purchase, but live beyond Wellington, and are unable to attend the launch, books can also be ordered, but will also incur an extra few dollars postage cost.

When placing an order with Ken, please indicate the details of the address to which the book is to be sent, and the intended method of payment to be made to the society. Ideally, payment can be made by direct credit into the society's bank account: BNZ Tawa 02 0552 0033337 00

Please note: The book is published by the Tawa Historical Society which is a non-profit organisation. It seeks to defray the cost of printing through sales of the book.



Musical Playgroup

A music / play group for preschool children
and their minders



The music session with the children can include singing, rhythm, movement, playing instruments, learning positional language, colours and counting. There's a creative morning tea for the children and coffee for the adults! It is a very caring and friendly group.



Fridays 16 October and 11 December, 10 - 11:30am

at Tawa Union Church, 6 Elena Pl, Tawa

Contact: Rona Belcher 232 4675 and Barbara Russell 232 5831

NOEL TOCK COMMEMORATION PLAQUE

Noel Tock was Tawa's Borough Manager (Chief Executive in today's terms) and Town Clerk from 1964, when he started as deputy town clerk, through to 1989. He made a huge contribution to Tawa in that time, and that has now been commemorated with the installation of a plaque in the new outdoor barbecue area at the Tawa Pool.

Noel Tock lives in Waikanae. Unfortunately his health is failing and he is unlikely to get to Tawa Pool to see the plaque for himself.

Details of his contribution to Tawa are outlined in Ken Cassell's 1988 book "Tawa – Enterprise and Endeavour". Here are a few relevant paragraphs:

Noel Tock joined Pat Campbell (Tawa Town Clerk) as his deputy in 1964 Hailing from Grimsby in England he came to New Zealand in 1957 and after nearly seven years in the Public Service came to the Tawa Borough Council.

TAWA THE FIRST IN NEW ZEALAND

As rates charges increased in line with inflation and growing commitments, it became necessary to consider payment by instalment. Dunedin had sought and obtained an empowering act but delayed its implementation of such a system. Tawa in the meantime took advantage of the legislation and in 1969 was the first local body in New Zealand to require rates by instalments.

IMPROVING THE WATER AND SEWERAGE SYSTEMS

When Pat Campbell retired in 1971 Noel Tock took his place and soon afterwards his office was changed to that of Borough Manager One of his first undertakings was the upgrade of the water and sewerage systems so that they could cope with the fast growing population. Reservoirs had been built above Chester and Takapu Roads and Noel saw the problem solved by the erection of another holding 4.5 megalitres above Linden. Later in 1985 a fourth reservoir would be built above the Arohata Institution.

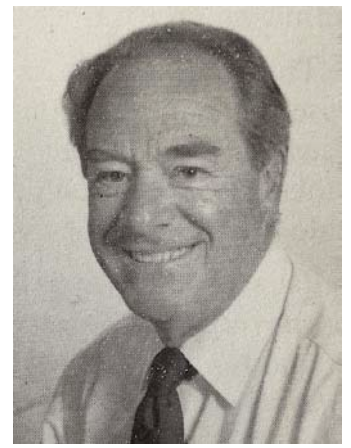
TAWA SWIMMING POOL

Another major undertaking early in Noel Tock's administration, and undoubtedly the most demanding on staff, was the building of the swimming pool. This splendid amenity provides completely covered, heated and filtered facilities equal to the best.

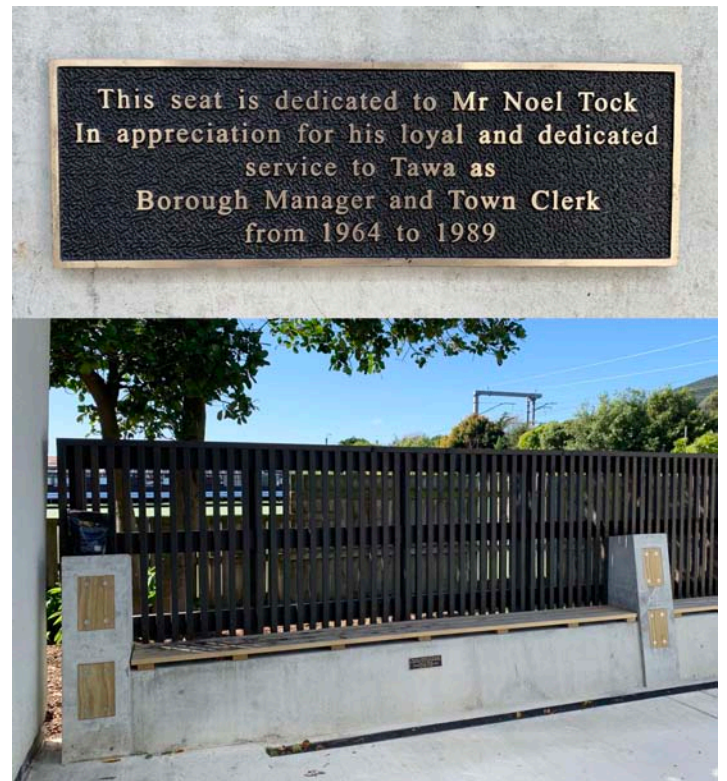
The firm of McLaren and Maycroft was employed to design the pool and because tenders were too high the Council acted as its own contractor and engaged sub-contractors for various aspects of the work. Noel Tock was kept extremely busy administering the project while Roy Williams, the Borough's engineer, supervised the various installations.

MORE FACILITIES IN TAWA

Other sporting amenities erected during this period were the pavilions at Linden and Redwood, the Squash Club building and the Kapi-Mana Tennis Pavilion.



Noel Tock late 1980s



contd

The Pensioner Housing units were also noteworthy. Standard plans were available but the Building Inspector R W (Bob) Patience designed the ten single and one double units to harmonise more effectively with the proposed setting and a Government subsidy was given when Housing Corporation approval was obtained.

COMMERCIAL REDEVELOPMENT OF CENTRAL TAWA

Probably the outstanding development of the Tock era has been the commercial redevelopment of central Tawa. Starting in Pat Campbell's time with the purchase of properties as they became available – ostensibly for staff housing – the growing availability of centrally situated land encouraged the evolution of a plan by Commercial Centres Limited, and underwritten to some extent by banks and Woolworths, for the Tawa Plaza and the extensive adjacent parking area. This, the new Mervyn Kemp Library and the splendid Borough Council Chambers [now the Community Centre in Cambridge Street] have given Tawa a commercial and administrative centre of which it can be very proud.



GUIDED NATIVE BUSH WALK FOR THE COMMUNITY

Friends of Tawa Bush Reserves Inc.



Did you know that Tawa has some of the biggest tawa and mataī trees in the Wellington area? To provide an opportunity to view these and other native bush, FOTBR (Friends of Tawa Bush Reserves) is hosting a guided community bush walk in Redwood Bush and the Larsen Crescent Reserve, starting at 2pm on Sunday 15 November.

Please meet at the Brasenose Place entrance of Redwood Bush at 2pm. The walk will take approximately 2 hours and conclude in Peterhouse Street and return to Brasenose Place by the footpath.

The walk is open to anyone, but to determine the numbers participating, please email FOTBR Secretary, Carol Andrews by 8 November, secretary@tawabush.org.nz



VOLUNTEERS NEEDED FOR THE REDWOOD CLUB

The Redwood Club needs volunteers to support our service to the older adults in our area.

We need help in either the mornings or afternoons. Duties include morning and afternoon tea service, helping with lunch/dishes and interacting with our members. Hours are 9.30am to 1pm and 2.30 to 4pm. We need volunteers on every day of the week, as we run Monday to Friday.

If you can help us or want to learn a little more, please ring the Redwood Club on 232 5521 and leave your name and contact details. We will call you back and talk to you about the Redwood Club.



NEW NANA'S SHED BOOK

Pre-publication offer for our new bilingual book:

Nana's Veggie Garden – Te Māra Kai a Kui

Publication date early October.

Nana's garden, it grows and it grows
from the tiny wee seeds she plants in neat rows.

Kei te tupu haere te māra a Kui, kei te tupu, kei te tupu
he kākano iti i ruia mai, he rārangi, he momo, he rārangi, he momo.

New Zealand has the world's best summers and the magic of being a child is still alive in Kiwi backyards. This summer, Bella/Ngapera, Jacob/Hākopa and Lucas help Nana/Kui grow, harvest and eat an amazing summer garden, and fill every day with heaps of fun, te reo Māori learning and bunches of awesome memories.



*Her summer garden is full of ripe greens:
lettuces, spinach and, best of all, beans.*

*Kī tonu tana māra raumati i ngā otaota
reka:
i te rētihi, i te kōkihi, ko te mea tino pai,
he pīni.*



Pre-publication price with free delivery*

One copy: \$22.50 (RRP \$25.00 plus p&h)

Enquire about education discount for multiple copies.

To purchase at pre-publication price, email order to kelseyhp17@outlook.co.nz or phone 232 7144.

We will invoice you. Note: Nan's Shed Books is not GST registered.

For details of more "Nana's Shed" books, see www.nanasshed.co.nz

HOUSEHOLD EARTHQUAKE PLANNING SESSION

If you're not sure about your next step towards being better prepared for an emergency, the Household Earthquake Planning session is for you!

This free one-hour session will provide tips on how you to prepare to help yourself, your household and your community when the worst happens.

WREMO (Wellington Region Emergency Management) is offering an *online* short-format class with a brief introduction to:

- The hazards we face in the Wellington Region
- The impacts of those hazards on your daily life
- How you and your household can be prepared for an emergency
- How you can get involved in the wider community's response



You are welcome to register for one of the upcoming sessions: 20 October 12.00pm to 1.00pm Virtual Earthquake Planning Series (Session 2)
OR 12 November 7.00pm to 8.00pm Virtual Earthquake Planning Series (Session 3)

For more information see <https://www.getprepared.nz/keep-up-to-date/course/>

As seen on the Tawa Community Noticeboard Facebook page:

LOVE TENNIS WEEKEND

Love Tennis Weekend at Tawa Tennis Club is Saturday 10th and Sunday 11th October 1pm to 4pm. Come and join in the fun – giveaways, prizes and lots of tennis!

Jumbo racquets, coaches on court, mini nets, sausage sizzle, lolly scramble and so much fun! Come have a hit with us!



PHOTOSHOOT

Tawa Linden Plunket Toy Library is hosting a fundraising photoshoot to raise funds for the toy library. \$10 (which comes straight back to the toy library) will get you and your family 15 minutes with a professional photographer and a digital photo of your choice. If you'd like more, you can of course purchase more.

Booking is super easy, you just need to click on the link below:

Sunday 29 Nov <https://jnjportraits.co.nz/schedule.php?id=11564>



NEW ZEALAND SHAKEOUT – Whakahaumaru Aotearoa

ShakeOut is held across the world to remind people of the right action to take during an earthquake – Drop, Cover and Hold – and to practise a tsunami hīkoi (evacuation) if in a coastal area.

New Zealand ShakeOut is taking place on Thursday 15 October 2020 at 9.30am.



KIWI COMMUNITY ASSISTANCE IN SEPTEMBER

In the month of September KCA's volunteers rescued and redistributed 18,154.89 kgs. It is also great that Johnsonville School Farmers' Market reopened on Sunday last week so our volunteers will start to go up again.

Here is a breakdown of the agencies that we assisted with food in Wellington City Council ratepaying area:

Challenge 2000	– 111.25 banana boxes
HHT School	– 8 banana boxes
House of Grace	– 11 banana boxes
Linden Community Centre	– 11 banana boxes
Linden School	– 12 banana boxes
Newlands Foodbank	– 49 banana boxes, 1 box of toiletries
Redwood Club	– 2 banana boxes
St Vincent de Paul Tawa Foodbank	– 26 banana boxes
Salvation Army Johnsonville	– 39 banana boxes
Salvation Army Tawa Foodbank	– 12.5 banana boxes
Soup Kitchen Wellington	– 190 banana boxes
Tawa Central Kindergarten	– 9 banana boxes
Tawa College	– 12 banana boxes
Tawa Community Centre	– 13.5 banana boxes
Tawa Intermediate School	– 9 banana boxes
Tui Park Kindergarten	– 13 banana boxes
Wellington City Mission	– 10 banana boxes
Wellington College	– 2 banana boxes
TOTAL	– 541.25 banana boxes of food

We have also distributed a lot of non-food – clothing, car seats, etc back into the

Wellington City Council ratepaying area.



Kiwi Community Assistance

Working together to reduce inequality in our communities

In 13,991kgs KCA will have surpassed the volume of food rescued and redistributed in the 12 months to 31st March 2020 in less than seven months of operating this year. We have received no food as yet from the NZ Food Network and continue to rescue food from our usual sources with Johnsonville School Farmers' Market back online in Level 1. We have assisted nearly 10,000 residents in this period.

INTERNATIONAL DAY OF OLDER PERSONS

It was last week, but 1 October 2020 was the inaugural annual celebration of Probus Day with an inaugural Probus Day theme all about Staying Connected. Probus is a Community Service Activity of Rotary Clubs. Probus is all about FRIENDSHIP, FELLOWSHIP and FUN in retirement.

Established in New Zealand in 1974, Probus is a not-for-profit organisation with over 14,000 members. Probus Clubs provide the opportunity for retirees and semi-retirees to come together in our local community, make new friends, hear wonderful guest speakers, participate in a range of activities, and open the door to new experiences and friendships in retirement.

The Probus Club of Tawa commenced in 1995 and today has 80+ members. Tawa Probus meets monthly at the Tawa Bowling Club, 13 Davies St, Tawa, on the 3rd Monday of the month (except December and January), at 9.30am, for speakers and morning tea.

For further information contact Richard Herbert on 232 6828 or email herbert.r@xtra.co.nz

The following article appeared in this newsletter in May 2019, almost 18 months ago:

TAKAPU ROAD AND THE MOTORWAY OFFRAMP

The intersection of Takapu Road and the motorway (SH1) southbound offramp isn't especially safe. It's a very short offramp from the motorway and many cars do not slow down to 50km/h as quickly as they need to.

The intersection is a little complicated with NZTA being responsible for the motorway offramp portion and Wellington City Council responsible for the Takapu Road portion. There was the possibility that the intersection might be re-designed as part of the changes that would be made for the proposed Petone to Grenada link road. However that project has now been shunted way into the future.

Local elected officials have previously requested better signage from NZTA requesting motorists to reduce their speed to 50km/h immediately on leaving the motorway, but that hasn't yet happened.

Wellington City Council officers recently met with NZTA representatives to discuss what immediate action could be taken to improve this intersection. We are still awaiting an official response but we believe that, at the minimum, increased signage requesting motorists leaving the motorway to slow down more quickly is likely to be installed. We'll let you know once this has been confirmed.



After chasing up NZTA for a "progress report", we have received this response on the current situation:

"Thank you for your email of 22 September 2020 regarding proposed safety improvements for the Takapu Road motorway off-ramp. This letter provides you with an update on this project.

Following consultation with the Wellington City Council (WCC) in 2019, detailed design drawings are now being developed. Once completed, these will be sent to the WCC and other interested parties for consultation.

Once the detailed design has been endorsed, the works will be scheduled and constructed under our Network Outcomes Contract. Construction is expected to commence by the end of the 2020 calendar year."

SENIORS' WEEK IN TAWA

Seniors' Week is held in spring every year and sees a series of community-led events for seniors pop up across the city.

Te Wiki Kaumātua – Seniors' Week 2020 will be held this year 9-15 November. It is a week of community events and activities for our senior citizens, all about building connections and reducing social isolation in later life.

See more details on the WCC site at <https://wellington.govt.nz/events/annual-events/seniors-week>

This is what is happening in Tawa around Seniors' Week:

Seniors Movie Day – Come along to the Boardroom at the Tawa Community Centre on Tuesday November 10 for some movie fun. 12.30 for a 1pm start. Tea and coffee available. Bring your lunch if you like.

Seniors Expo Day – Have some time during the day and not sure what to do? Come along to our expo for all things Senior. See what is on offer for you in your community. Friday November 13 from 10am-12noon at the Tawa Community Centre. Refreshments provided.

Plus, during Seniors' Week we are offering free open sessions for all groups that run regular classes here at the Tawa Community Centre appropriate for seniors:

- Steady as you go with Age Concern Monday 1pm-2pm
- Tawa Craft Tuesday 10am-12noon
- SmoothFIT Tuesday 11am-12noon
- Tawa College Community Education Tai chi Tuesday 9.30am – 10.30am
- Tawa College Community Education Pilates Wednesday 10am-11am
- Community Art Class Thursday 10am-12noon
- Table Tennis Thursday 9.30am-11.30am
- WalkFIT Thursday 1pm-2pm
- Ezy Movers Friday 9.30am -10.15am



JP SERVICE

Please note that there is a JP (Justice of the Peace) at the Tawa Community Centre every Tuesday from 10am to 12pm. No bookings are required.

Tawa Community Centre

A friendly place to pop in during the hours of 9am-1pm and 2-4.30pm on weekdays, or hire a room or hall for your community group / birthday party / meeting at reasonable rates.

Like us on Facebook at:

<https://www.facebook.com/TawaCommunityCentre>
and sign up to our newsletter by clicking the email signup button.

2 MINUTES WITH Fonoimoana (Fono) Faaita

I (the Ed.) first met Fono in the early days of the Tawa Community Centre when I was its first co-ordinator some 12 years ago. The House of Grace Pentecostal Church, of which Fono is pastor, is probably the community centre's longest regular 'user', meeting there every Sunday since the early days of the centre.

Fono also plays a role in our local train service as you will read in the following interview.



Where were you born and where did you grow up?

Leulumoega Tuai (near Apia) on the island of Upolu, Samoa.

Where were you educated?

Aana Junior High School, Samoa; Laidlaw Bible college, Auckland; Pacific Bible College, Wellington.

How long have you lived in Tawa? 13 years.

What do you like about Tawa, and what would you like to see improved?

It's a quiet area, close to town and close to Porirua, also close to the motorway. There's a great community here. It has good facilities like the community centre, railway stations and shops close by.

What about family?

My wife is Rosalind. We have four children plus an adopted son who now lives in Australia. Our three daughters are in their 20s and are working, and our son (14) is at St Pats College (Town).

Work experience over the years

I started work at age 16 as an office boy with the Electric Power corporation in Samoa. I was a mechanic at the Coca-Cola company for approximately 12 months before moving back to the Electric Power corporation as a meter reader.

In 1982 I moved to Mangere, Auckland and worked for six months at Thone EMI TV. I then moved to Wellington where many of my cousins were. I initially came for a visit but decided to stay. I worked for Wellington City Council as a parking officer for 7-8 years and enjoyed that job. When that was privatised I was offered redundancy and accepted. I went back to Auckland and was involved in recycling work.

I met my wife in Wellington. We were married in 1992 and lived in Pakuranga. I worked for the Manukau City Council in parking enforcement services for seven years. I then took up a job as a water meter reader in greater Auckland. It involved a lot of travelling and I became familiar with most streets in Auckland city.

We attended the Apostolic Church close to us in Pakuranga and got involved in the leadership side. We moved back to Wellington in 2007. Some of my wife's family lived in Tawa and were involved in the local Apostolic Church. We moved here to look after that and looked for other work too.

Rosalind started finance work with the Salvation Army in the city. I started working with Tranz Metro in October 2007 as a train manager – checking tickets, doors and safety. I am still with them today.

We needed space for our small church and began meeting at the Tawa Community Centre 2007-08 and have been there ever since. We have been happy there and our small church is growing.

What are your interests and hobbies?

I love rugby. I played for Ponke a few years ago. I started as wing when I was skinny and fast, and ended up as a prop!

..... contd

contd

Favourite sports team?

The Hurricanes, and I sometimes watch the Tawa rugby team at Lyndhurst Park. I live near there.

Favourite musical group and/or individual singer?

I like Sol3 Mio.

What is your favourite holiday destination in New Zealand?

We went down to the South Island one time. I particularly enjoyed visiting Nelson and Akaroa.

What accomplishments/achievements in your life give you the most satisfaction/pride?

I'm glad that my children have turned out pretty well. We encouraged them at school and in their own Christian beliefs, to "ensure their future".

What are two or three interesting things about you that local people may not know?

1. I'm a Servant (pastor) of God.
2. I want to treat everyone the same.
3. I'm a family man, love my beliefs, my culture and all nationalities.

What are three things you would like to do before you die?

1. Make sure I lead my family to a Blessed Future – spiritually and physically.
2. Love, be friendly and helpful – to have safe communities and work together to look after each other.
3. Do the work and complete it, "before night comes" (I die).



The poster features a red background with a decorative green and red leafy border at the top. In the center, the text 'TAWA LIONS CHRISTMAS PARADE 2020' is written in large, white, bold letters. To the left of this text is the 'TAWA Wellington' logo, which consists of a stylized 'T' made of colorful bars above the word 'TAWA' and 'Wellington' below it. Below the main text, on a white background, it says '2PM, SATURDAY 12 DECEMBER MAIN RD, TAWA' in blue, bold letters. To the right of this, it says 'followed by the Tawa Rotary Christmas Party in the Plaza!' in blue, bold letters. At the bottom right is the 'Rotary Tawa' logo, which is a blue circle with a white gear-like border and the text 'Rotary Tawa' inside.

**TAWA LIONS
CHRISTMAS PARADE
2020**

**2PM, SATURDAY
12 DECEMBER
MAIN RD, TAWA**

**followed by the Tawa Rotary
Christmas Party in the Plaza!**

**Rotary
Tawa**

Ngā mihi

Malcolm Sparrow
info@tawalink.com
027 232 2320



“Be fearless in pursuit of what sets your soul on fire.”

“Stop being afraid of what can go wrong and start being positive about what can go right.”

“Politicians promise you heaven before election and give you hell after.” – Emma Goldman

“A politician thinks of the next election. A statesman, of the next generation.” – James Freeman Clarke

This newsletter is emailed monthly to around 1350 Tawa households, businesses, schools, churches and clubs/groups (anyone who has an interest in the community of Tawa).

Some articles in this newsletter have been sent through by members of the Tawa community and have been published ‘unedited’. They may not necessarily reflect the views of the Editor.

If you no longer wish to receive the newsletter, please send us an email requesting that your name be deleted from our list.

For back issues of the newsletter see www.tawalink.com/newsletters.html



Top left:
Tawa Community
Garden in Oxford Street

Above:
Early voting at the Tawa
Community Centre in
Cambridge Street

Left:
Progress at the
Waitomo petrol station
site next to Outlet City,
Main Road South